

Standard Citrix Mac Installation

NOTE: Before installing the Citrix Receiver please ensure you uninstall your current copy of Citrix. This can be accomplished by reopening the original dmg file and selection the Uninstall option or removing the Citrix client and following this document to manually remove the Citrix software:
<https://support.citrix.com/article/CTX134237>

If you do not remove the previous Citrix software you will experience performance and user issues with your new Citrix Receiver instance.

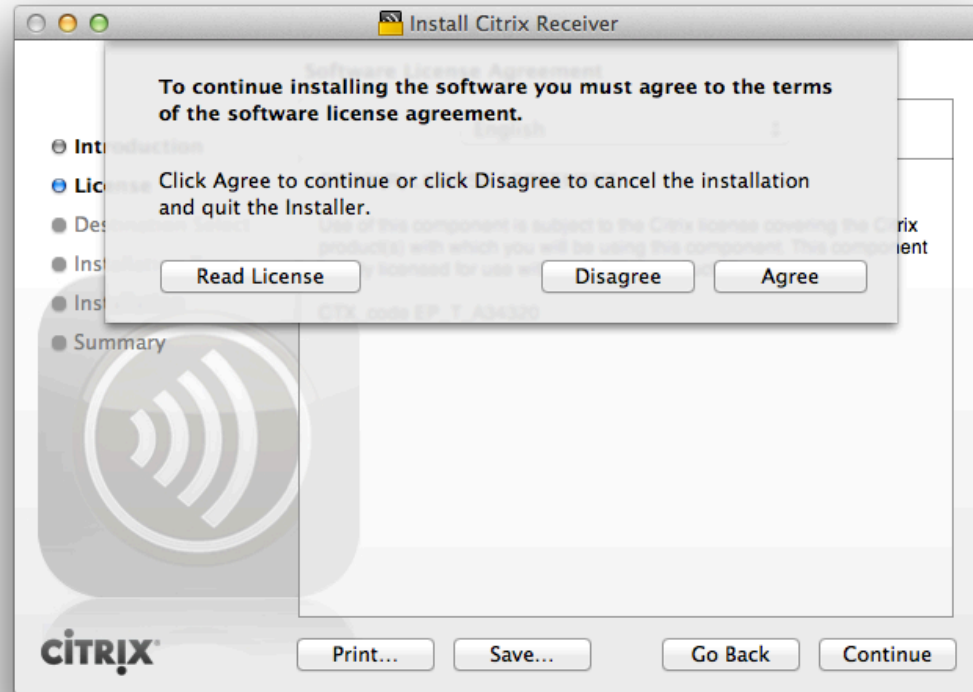
Installation

The Citrix Web Portal URL, Citrix Login and Application name will be sent to you in a welcome email. For the purposes of this document the Citrix Web Portal will be <https://harvardapps.harvard.edu> and the Citrix Login will be fas_domain\jones. The Citrix Mac installation file can be downloaded from the Citrix Web Portal. This will copy the CitrixReceiver11_4_3.dmg file to the Downloads folder. Please see installation instructions below:

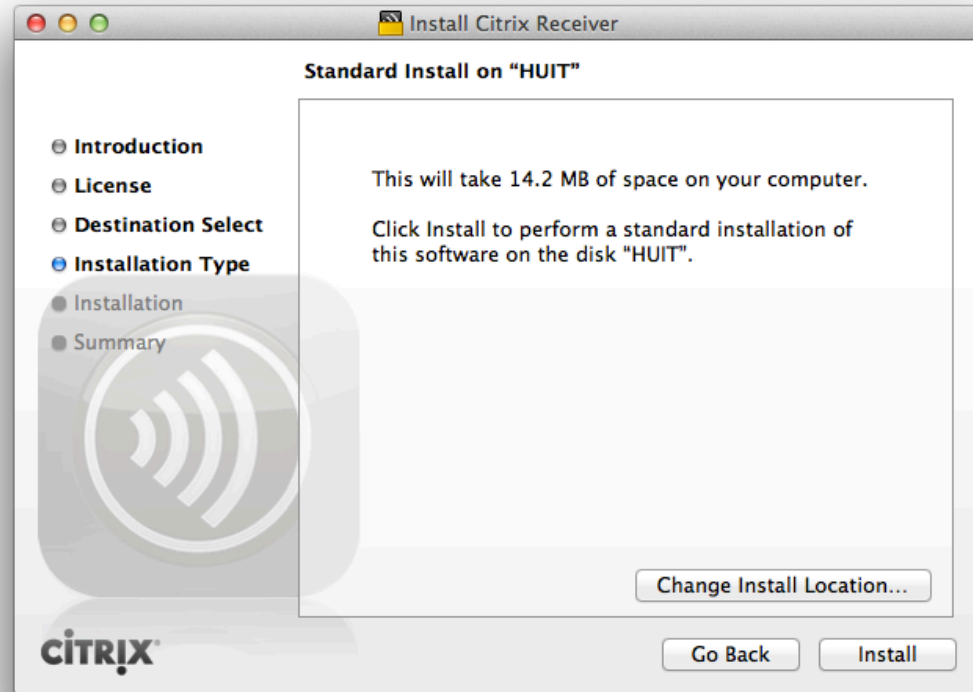
1. Double click on the .dmg file and then double click the "Install Citrix Receiver.pkg" file



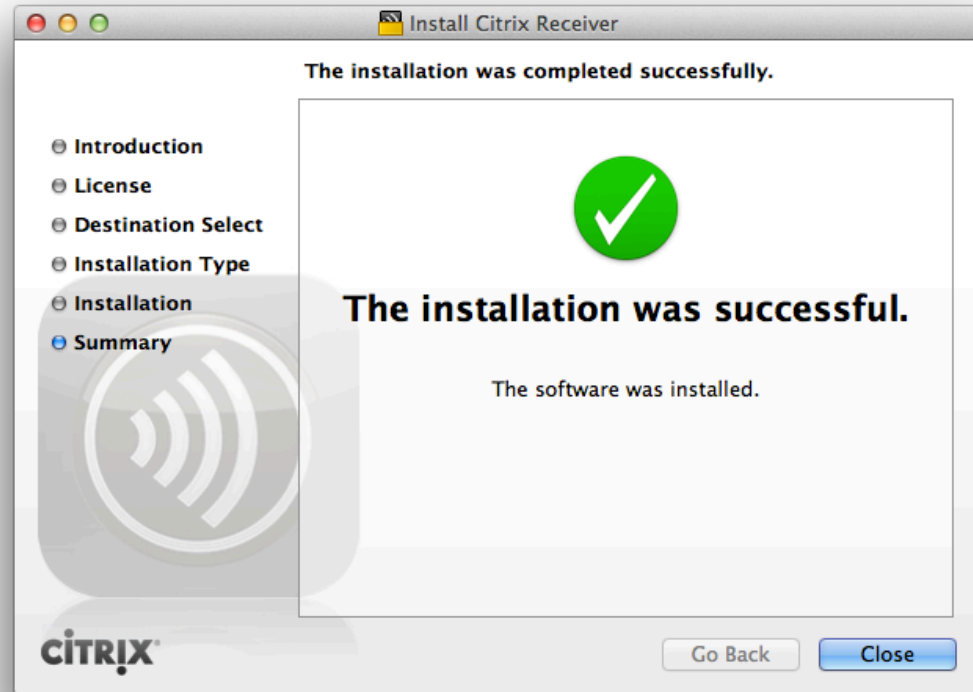
2. Click “Agree,” and accept license



3. Click on "Install" to begin the installation



4. Once the installation is complete, click "Close"



Accessing your Citrix Application

There are two methods of accessing your Citrix Application. Web Based or Desktop Based. The instructions below will describe each access method.

Web Based

This is the quickest method of access your Citrix Application and does not require any further configuration of your Citrix Receiver.

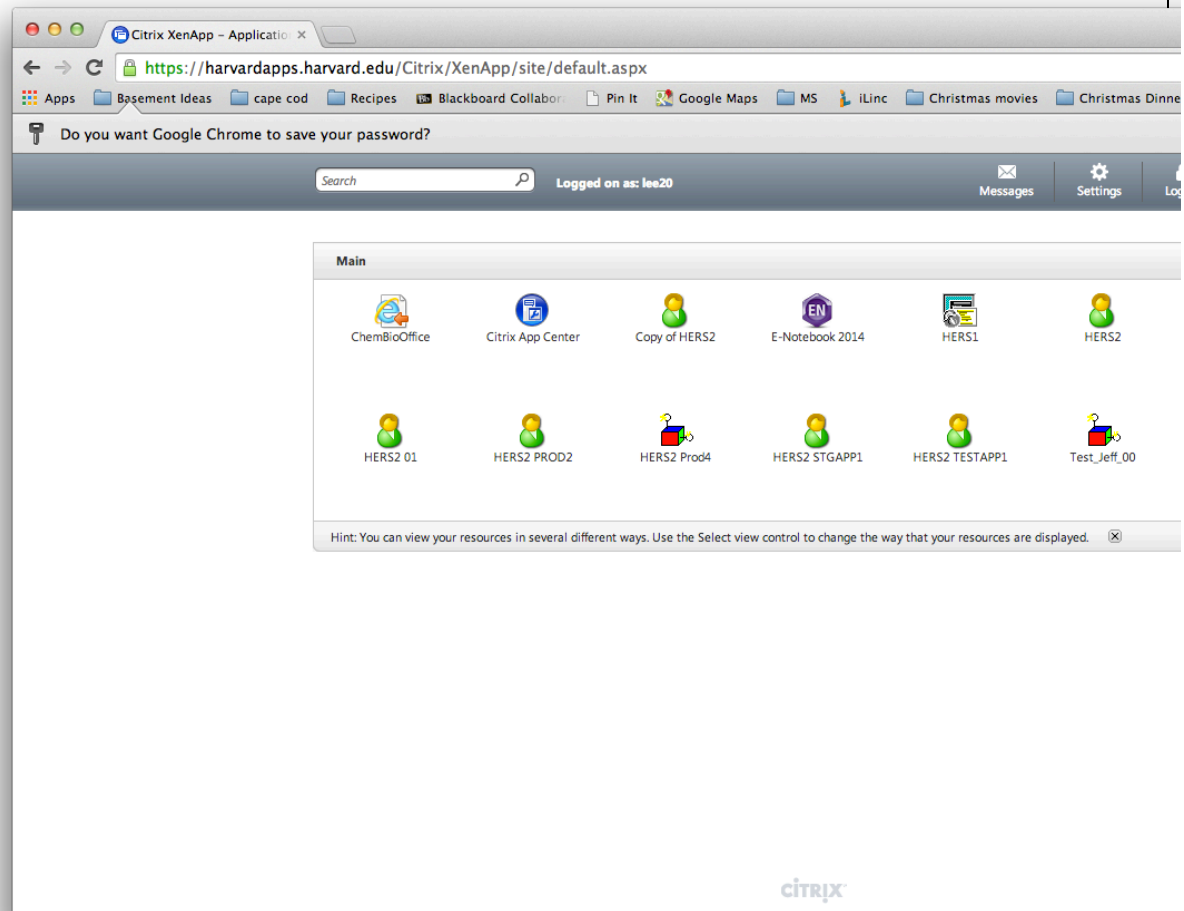
1. Open your Citrix Web Portal
<https://harvardapps.harvard.edu>



2. Log in with your Citrix username and domain as indicated by your specific Citrix Application instructions.



3. Select your Citrix Application from the list of icons. This will launch your Citrix application.



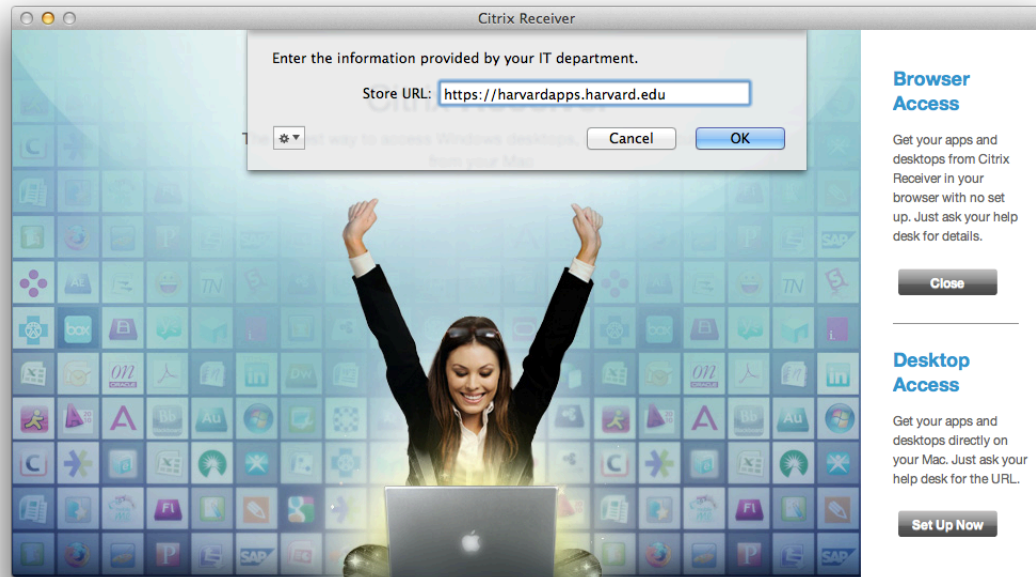
Desktop Based

This access method will place an icon of your Citrix Application on your Desktop for future access. This entails some configuration but allows you to access your application without a web browser.

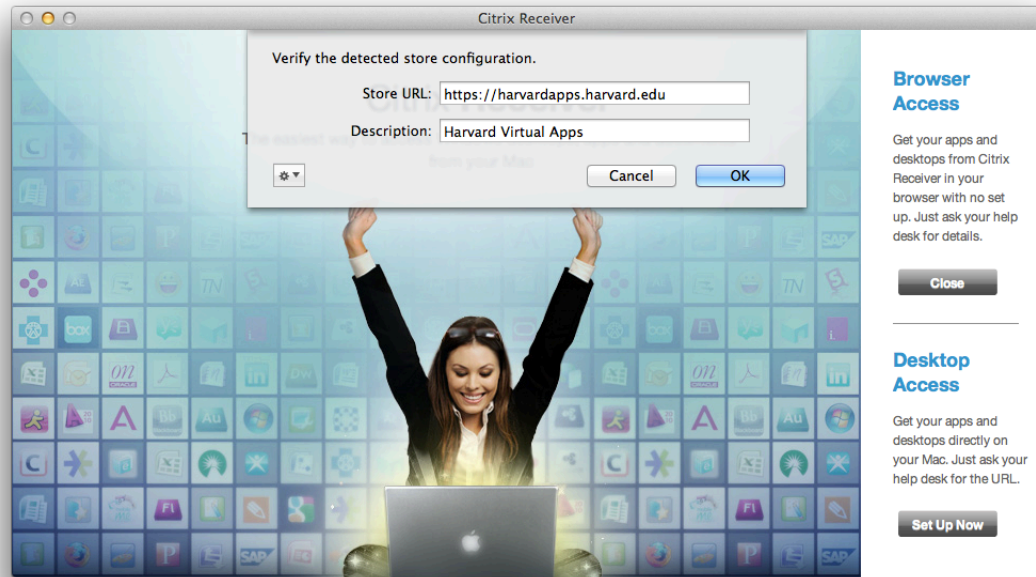
1. Open your Citrix Receiver from your Application menu and select "Desktop Access"



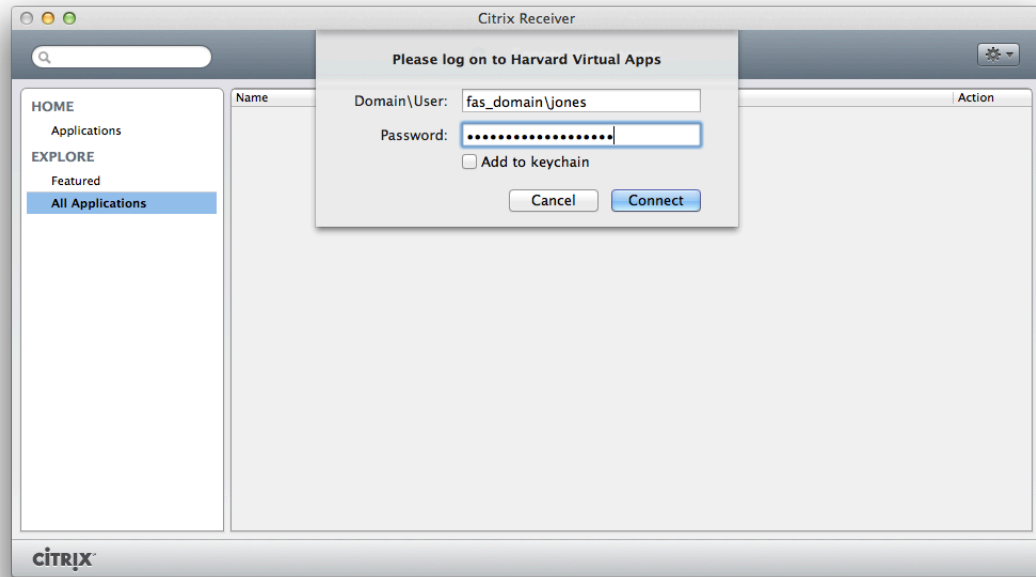
2. When prompted for “Store URL” please enter the Citrix Web Portal. <https://harvardapps.harvard.edu>



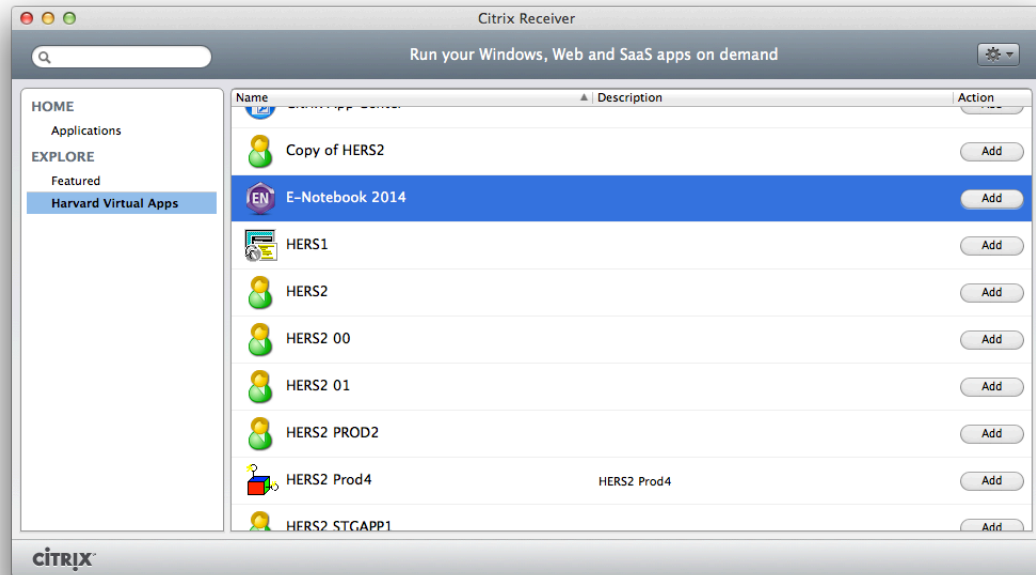
3. Click OK to confirm the detected store configuration



4. Next login with your domain\username and password.



5. Click Harvard Virtual Apps and select your Citrix Application.



6. This will install the Citrix Application on your Citrix Receiver Application window. To create an icon on your desktop please drag this icon onto your desktop. In the future you will be able to launch the Citrix Application from this Desktop icon.

