

## Standard Citrix Windows Installation

**NOTE: Before installing the Citrix Receiver please ensure you uninstall your current copy of Citrix. This can be accomplished via Program and Applications under the Control Panel. If you need to manually remove the Citrix application please refer to this document: (<http://support.citrix.com/article/CTX325140>).**

**If you do not remove the previous Citrix software you will experience performance and user issues with your new Citrix Receiver instance.**

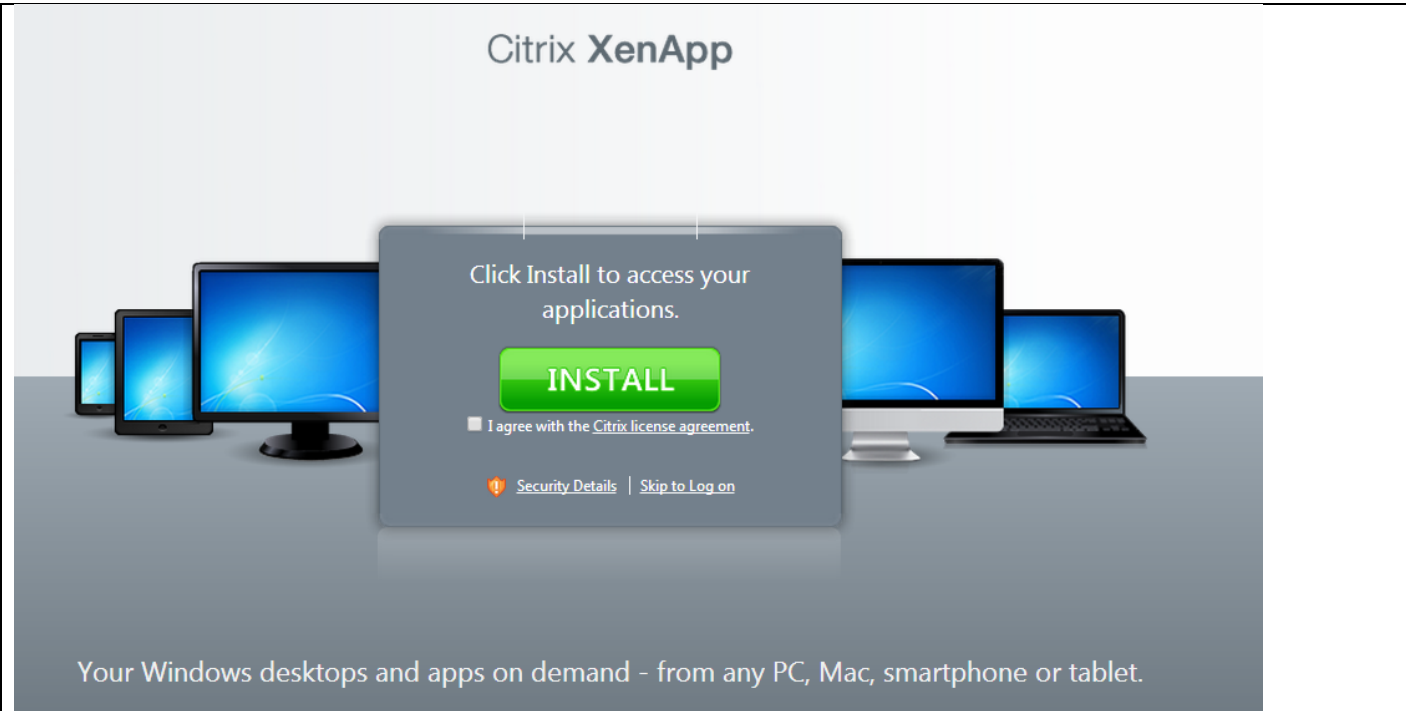
## Installation

**The Citrix Web Portal URL, Citrix Login and Application name will be sent to you in a welcome email.** For the purposes of this document the Citrix Web Portal will be <https://harvardapps.harvard.edu> and the Citrix Login will be fas\_domain\jones.

The Citrix Windows installation file can be downloaded from the Citrix Web Portal. This will copy the CitrixEnterprise.exe file to the Downloads folder. Please see installation instructions below:

## Installing Citrix Client:

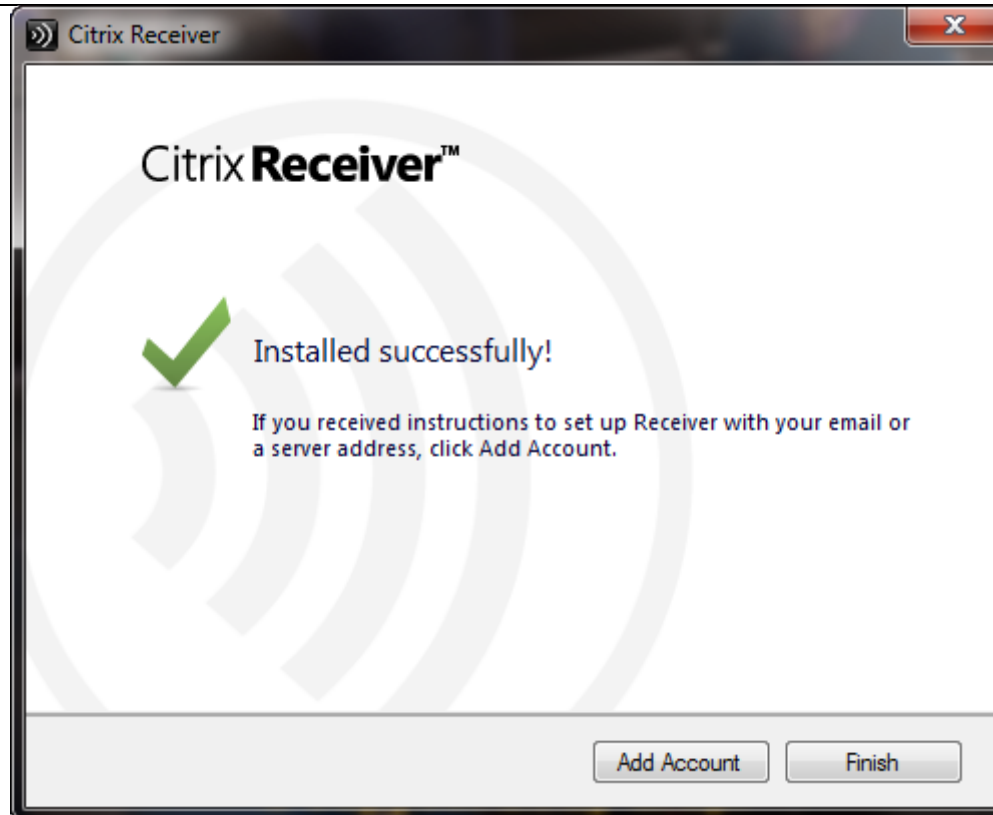
1. Go to the Citrix Web Portal:  
<https://harvardapps.harvard.edu>. There you will be prompted to install the Citrix Client unless you have already performed the installation.



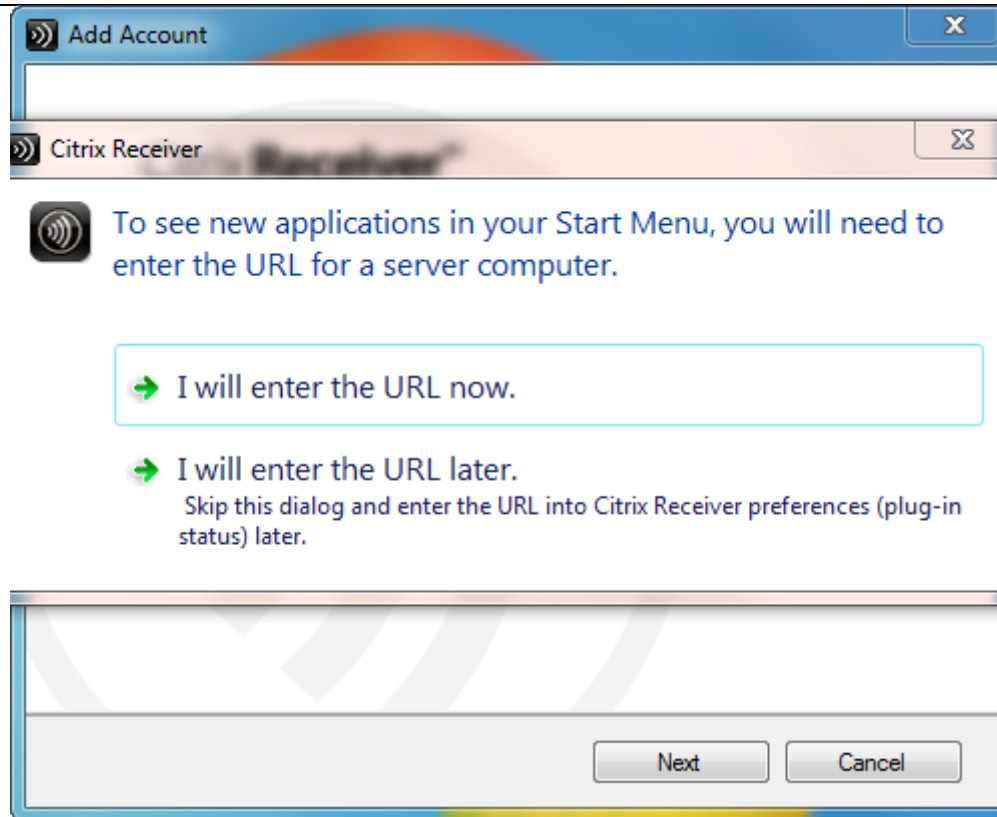
2. Once you have downloaded the CitrixEnterpriseReceiver client, launch it. Click Install.



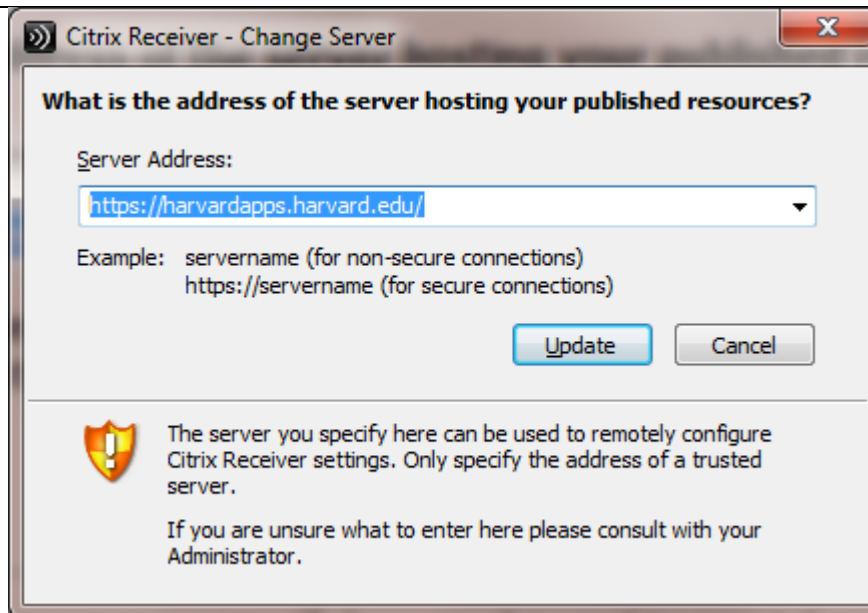
3. Once the installation has been completed, please click Add Account and follow the Citrix Application specific Instructions for the Citrix Settings.



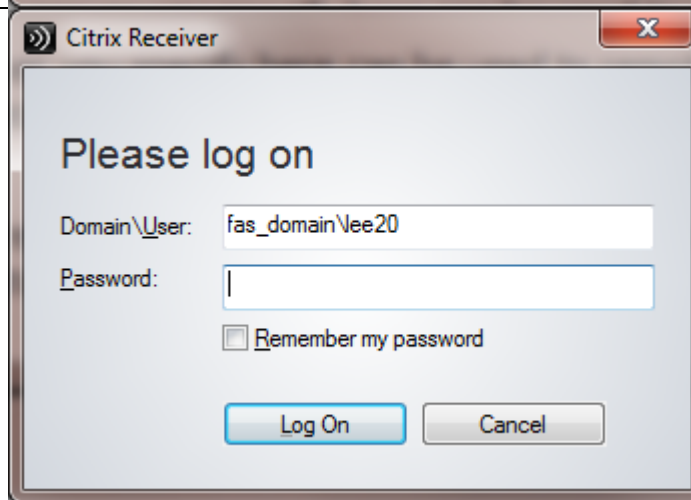
4. Click I will enter the URL now.



5. In the Server Address field enter:  
<https://harvardapps.harvard.edu>  
And click Update.



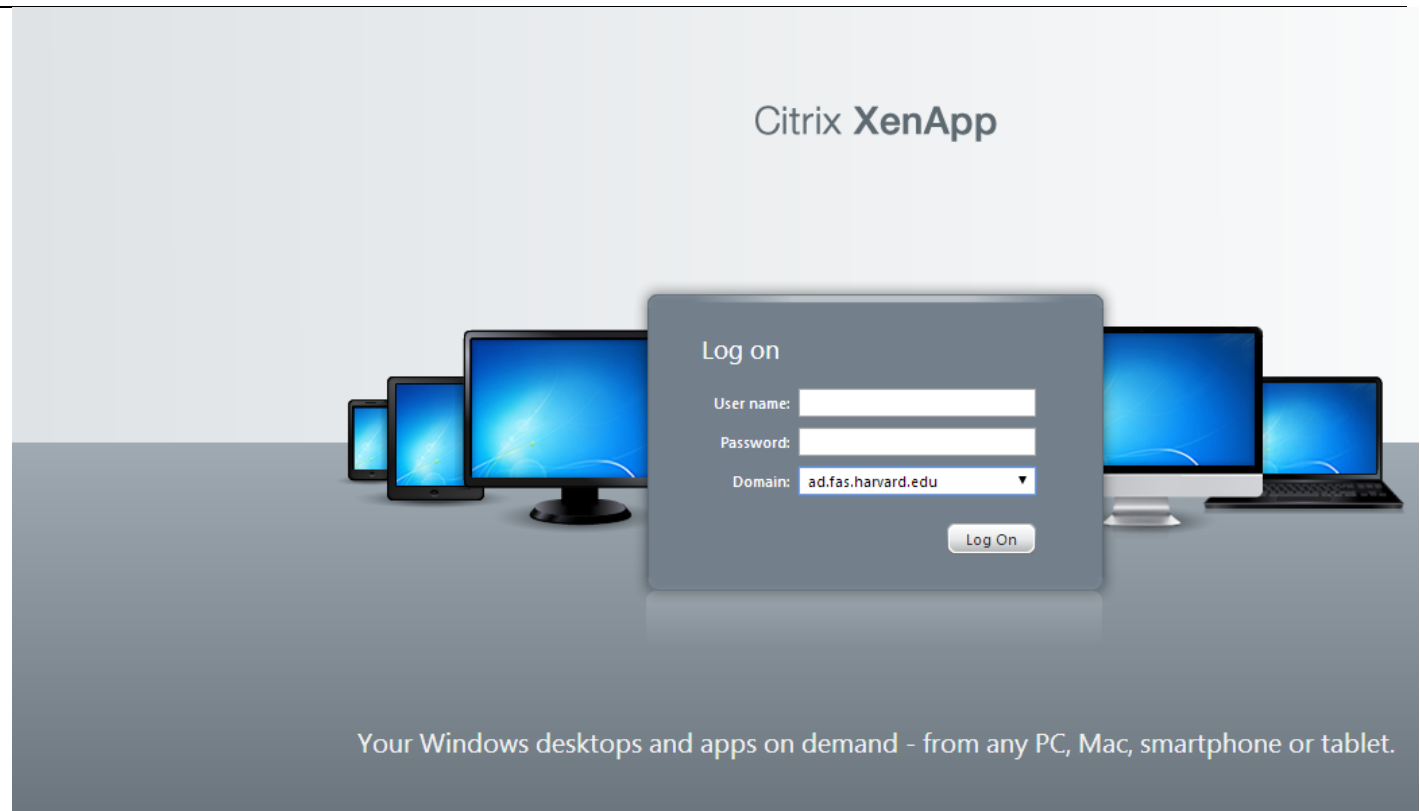
6. Once you have completed the installation, the Citrix Receiver will ask you to login with your Citrix Login. Once you logon, you will see your Citrix Application on your desktop.



7. Alternatively, once the Citrix client has been installed, go back to the Citrix Web Portal:

<https://harvardapps.harvard.edu>

Login with your Citrix Login



Citrix XenApp

Log on

User name:

Password:

Domain:

Log On

Your Windows desktops and apps on demand - from any PC, Mac, smartphone or tablet.

The image shows a login interface for Citrix XenApp. At the top, the text "Citrix XenApp" is displayed. Below it, a central "Log on" dialog box is overlaid on a background of various devices (smartphone, tablet, desktop monitor, laptop) displaying a Windows desktop. The dialog box contains three input fields: "User name:" with a text input, "Password:" with a password input, and "Domain:" with a dropdown menu showing "ad.fas.harvard.edu". A "Log On" button is located at the bottom right of the dialog. At the bottom of the entire graphic, the text "Your Windows desktops and apps on demand - from any PC, Mac, smartphone or tablet." is written.

8. Once you have logged in, you will be presented with your Citrix Application.

